

Parkheath

Sold on Service

Honeybourne Road NW6

£2,400 PCM (£554 per week) - Camden Band D



Charming 2 bedroom apartment

Central West Hampstead location

Spacious and light reception room

Large main bedroom

Conveniently situated near West Hampstead transport facilities

2nd floor of this highly revered mansion building

Wood floors and period features

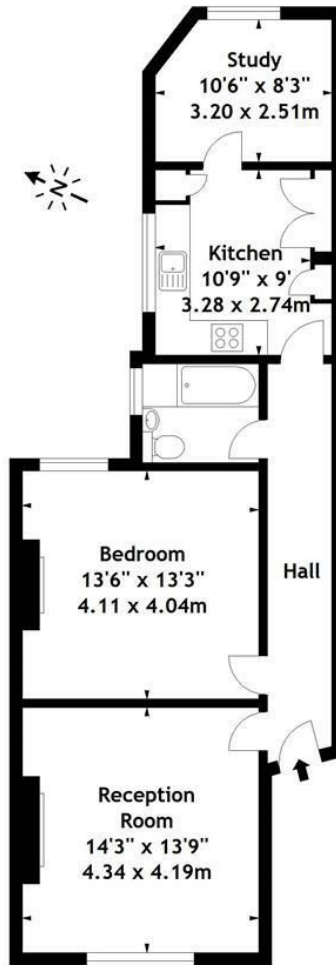
Fitted kitchen (includes dishwasher)

2nd single bedroom/office (accessed via the kitchen)

EPC: Rating: D, Council Tax: Camden band D

West Hampstead Office 020 7794 7111

Yale Court,
Honeybourne Road, NW6
Approx. Gross Internal Area
718 Sq Ft - 66.70 Sq M



Third Floor

Measured in accordance with RICS guidelines. Every attempt is made to ensure accuracy, however all measurements are approximate. This floor plan is for illustrative purposes only and is not to scale.
© Datography Ltd 2014
Photographs * Floorplans * Virtual Tours
Tel: 0845 643 4401 www.datography.com

The particulars do not constitute part of an offer or contract. The particulars, including text, photographs and plans, are for the guidance only of prospective purchasers/tenants and must not be relied upon as statements of fact. The descriptions provided therein represent the opinion of the author and whilst given in good faith should not be construed as statements of fact. Nothing in these particulars shall be deemed a statement that the property is in good condition or otherwise or that any services or facilities are in good working order. All measurements are approximate